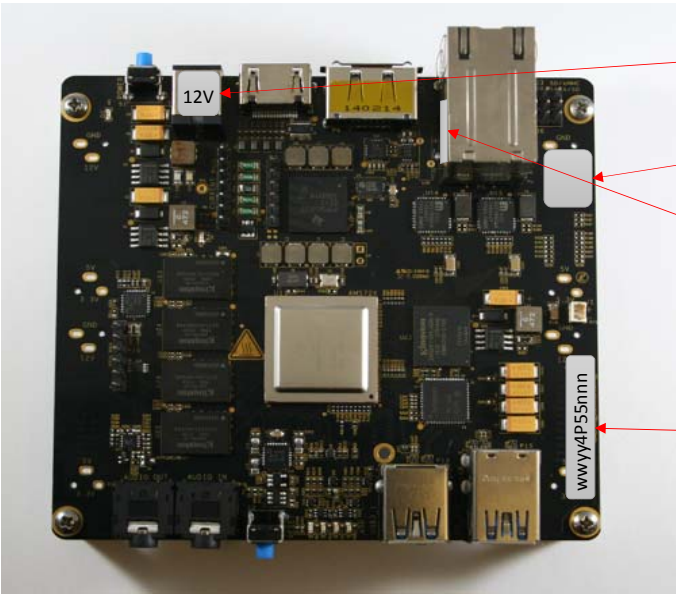


Item No	Qty	Description	Manufacturer	Part Number	Revision	NOTES
1	1	ESD BAG,6"x6"	U-LINE	S-7624		
2	1	AM572X GP EVM, PROCESSOR MODULE	PTI	TI_AM572x_PM_RevA3a	A3a	
3	1	HEATSINK CPU W/ADHESIVE 1.01"SQ	CTS	BDN10-3CB/A01		
4	1	12V INPUT POWER LABEL, 8mm x 8mm	PTI			12V
5	1	SERIAL # AND BARCODE LABEL	PTI			WWYY4P55nnnn
6	1	BOOT SETTINGS LABEL, CUT TO SIZE	PTI			Graphical showing of jumper settings
7	1	BATTERY INFO LABEL, 1/4" X 3/4"	PTI			Remove R416 Before installing BAT2

PROCESSOR MODULE TOP SIDE

AM572X EVM



12V LABEL

BOOT SETTINGS LABEL
(COVER FCC/CE)

BATTERY INSTALL LABEL
(OPTIONAL PLACE - BOT SIDE)

SERIAL NO LABEL
(COVER BEAGLEBOARD SILK)